

6½ Digit PXI Digital Multimeters (M9181A, M9182A, M9183A)

- 6½ digit resolution
- High throughput: up to 15,000 rdgs/sec, 66 μ s single reading interval
- DCV basic one year accuracy: up to 40 ppm
- DCV, ACV, DCI, ACI, 2- and 4-wire resistance measurements
- Various DMM measurement types and DC source function on higher-end models



Overview

The Keysight Technologies, Inc. M9181A PXI digital multimeter provides the most popular measurement functions, including DCV, ACV, DCI, ACI, 2- and 4-wire resistance, at an affordable price. Keysight's M9182A and M9183A 6½ digit high performance PXI digital multimeters (DMMs) offer fast throughput, flexible measurements, and trustworthy results. The M9182A provides ten built-in measurement types with all the accuracy and stability you would expect from 6½ digit DMM. The M9183A provides the same capabilities as the M9182A, with market-leading measurement speed of up to 15,000 readings per second, additional ranges, and a DC source.

Industries and Applications

- Aerospace and defense
- Automotive electronics test
- Industrial electronics test
- Medical device test
- Semiconductor and component test

Customer Values

- M9181A provides a low cost solution with the most common DMM measurements
- Measurements you can trust
- Higher test throughput due to the lowest latency
- Application development in the environment of your choice reduces development time
- Customer supportable calibration procedures as well as calibration services available from Keysight

PXI-DMM M918xA Feature Summary

All three products are 6½ digit PXI DMMs that take DCV, ACV, DCI, ACI, 2- and 4-wire resistance measurements.



| DMM | Description | DCV basic 1 year accuracy | Maximum reading rate at 4½ digits | Other measurements | Triggering | DC source | Floating isolation | Connector compatibility |
|--------|------------------------------|---------------------------|---|---|--|-------------------------------|--------------------|--|
| M9181A | Basic features PXI DMM | 90 ppm | 150 rdgs/sec, 6.7 ms single reading interval time | None | Immediate | n/a | CAT II 240 V | PXI-1 (J-1 only) |
| M9182A | High performance PXI DMM | 40 ppm | 4,500 rdgs/sec, 222 µs single reading interval time | Temperature, capacitance, frequency, period | Immediate, analog threshold, PXI trigger bus, external | n/a | CAT II 300 V | PXI-1 (J-1 only), PXIe hybrid slot |
| M9183A | Enhanced performance PXI DMM | 40 ppm | 15,000 rdgs/sec, 66 µs single reading interval time | Temperature, capacitance, frequency, period, offset compensated Ω, pulse width, duty cycle, totalizer/event counter | Immediate, analog threshold, PXI trigger bus, external | ± 10 V ± (1.2 µA to 12 mA) | CAT II 300 V | PXI-1 (J-1 only), PXIe hybrid slot |

Easy Setup... Test... and Maintenance

Hardware Platform

Compliance

The M9181A, M9182A and M9183A 6½ digit DMMs are PXI compliant, using either a cPCI (J1) or PXI-1 (J1) slot. Additionally, the M9182A and M9183A are also compatible with the PXIe Hybrid slot. Designed to benefit from fast data interfaces, these PXI DMMs can be integrated with other test and automation modules in a PXI, CompactPCI, or Hybrid chassis. The PXI format offers high performance in a small, rugged package. It is an ideal deployment platform for many automated test systems. A wide array of complementary PXI products are currently available. Products from Keysight include switches, multiplexers, digitizers, waveform generators, and local oscillators.

Software Platform

IO Libraries Suite

Keysight IO Libraries Suite offers fast and easy instrument connections. IO Libraries Suite 16.1 supports PXI, helping you display all of the modules in your system, view information about installed software and allows you to more easily find the right driver and start module soft front panels directly with Keysight Connection Expert.

National Instruments IO libraries are also supported, and may be used along with Keysight IO libraries.

Drivers

Keysight's digital multimeters come complete with software drivers for Windows XP, Windows Vista, and Windows 7 (32 and 64 bit). These software drivers work in the most popular test and measurement development environments including: LabVIEW, Visual Studio (C, C++, C#, Visual Basic), MATLAB, and VEE.

Easy Software Integration

Application code examples are included for LabVIEW, Visual Basic, C/C++, C#, and MATLAB – demonstrating DMM set up and basic functionality. These application code examples can be used to help you integrate the DMM module into your measurement system.

Soft Front Panel

The soft front panel provides easy to use instrument control. The graphical user interface guides developers through module setup so users can quickly configure the DMM.

One notable feature of the soft front panel is the Driver Call Log which allows the user to see the driver calls for each button pushed. The user can then incorporate the driver calls into their application program – enabling fast and easy program development.

Calibration

Each M9181A, M9182A and M9183A DMM is factory calibrated and shipped with an ISO-9002, NIST-traceable calibration certificate.

Calibration is required once per year. A documented calibration process allows you to do in-rack calibration using standard calibration sources. Alternatively, Keysight and 3rd party calibration labs offer calibration services for the PXI DMMs.

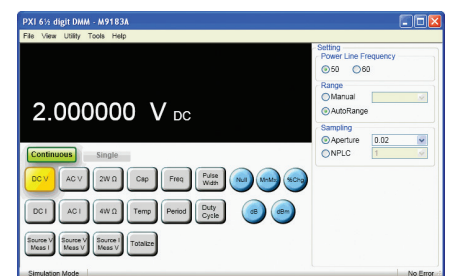


Figure 1. M9183A soft front panel

M9181A Technical Specifications and Characteristics

| M9181A: Accuracy specifications \pm(% of reading + % of range)^{1,2,3} | | | |
|--|-------------------------|---|----------------------------|
| Function | Range | Frequency, test current or burden voltage | 1 year 23 °C \pm 5 °C |
| DC voltage | 200.0000 mV | | 0.0100 + 0.0018 |
| | 2.000000 V | | 0.0090 + 0.0005 |
| | 20.00000 V | | 0.0120 + 0.0015 |
| | 200.0000 V | | 0.0100 + 0.0005 |
| True RMS, AC voltage ^{4,5} | 200.0000 mV | 10 Hz - 20 Hz | 3.60 + 0.35 |
| | | 20 Hz - 47 Hz | 0.50 + 0.35 |
| | | 47 Hz - 10 kHz | 0.16 + 0.35 |
| | | 10 kHz - 50 kHz | 0.40 + 0.35 |
| | | 50 kHz - 100 kHz | 2.20 + 0.50 |
| | 2.000000 V | 10 Hz - 20 Hz | 3.50 + 0.13 |
| | | 20 Hz - 47 Hz | 0.50 + 0.09 |
| | | 47 Hz - 10 kHz | 0.08 + 0.06 |
| | | 10 kHz - 50 kHz | 0.40 + 0.13 |
| | | 50 kHz - 100 kHz | 2.20 + 0.25 |
| | 20.00000 V | 10 Hz - 20 Hz | 4.50 + 0.18 |
| | | 20 Hz - 47 Hz | 0.65 + 0.15 |
| | | 47 Hz - 10 kHz | 0.09 + 0.12 |
| | | 10 kHz - 50 kHz | 0.30 + 0.18 |
| | | 50 kHz - 100 kHz | 1.70 + 0.25 |
| | 200.0000 V | 10 Hz - 20 Hz | 3.30 + 0.20 |
| | | 20 Hz - 47 Hz | 0.70 + 0.18 |
| | | 47 Hz - 10 kHz | 0.08 + 0.13 |
| | | 10 kHz - 50 kHz | 0.55 + 0.18 |
| | | 50 kHz - 100 kHz | 1.80 + 0.25 |
| Resistance ⁶ | 200.0000 Ω | 1 mA | 0.013 + 0.003 |
| | 2.000000 k Ω | 1 mA | 0.012 + 0.002 |
| | 20.00000 k Ω | 100 μ A | 0.012 + 0.002 |
| | 200.0000 k Ω | 10 μ A | 0.020 + 0.003 |
| | 2.000000 M Ω | 1 μ A | 0.060 + 0.004 |
| | 20.00000 M Ω | 100 nA | 0.200 + 0.003 |
| | DC Current ⁷ | 2.000000 mA | < 25 mV |
| 20.00000 mA | | < 250 mV | 0.050 + 0.005 |
| 200.0000 mA | | < 55 mV | 0.050 + 0.040 |
| 2.000000 A | | < 520 mV | 0.200 + 0.005 |

1. Specifications are for 1 hour warm up, within 1 hour self-cal, aperture \geq 0.5 sec; null measurement for DCV, Ω , DCI.

2. For temperatures outside the range of 23 °C \pm 5 °C, but within 0 to 50 °C, add 0.1 \times accuracy specification per °C.

3. 20% overrange on all ranges.

4. Minimum input specified: 20 mV or 5% of range, whichever is larger.

5. Signal is limited to 8×10^6 volt Hz product. For example, at 100 kHz, the highest input is 80 V.

6. Specifications are for 4-wire resistance measurements, for 2-wire, add 1 m Ω .

7. For 2 mA and 200 mA DCI ranges, resolution is limited to 5½ digits.

M9181A Technical Specifications and Characteristics (continued)

| M9181A: Accuracy specifications \pm(% of reading + % of range)^{1,2,3} | | | |
|--|---------------|---|----------------------------|
| Function | Range | Frequency, test current or burden voltage | 1 year 23 °C \pm 5 °C |
| True RMS, AC current ⁴ | 2.000000 mA | 10 Hz - 20 Hz | 2.90 + 0.20 |
| | | 20 Hz - 47 Hz | 1.00 + 0.20 |
| | | 47 Hz - 1 kHz | 0.12 + 0.20 |
| | | 1 kHz - 10 kHz | 0.22 + 0.20 |
| | 20.000000 mA | 10 Hz - 20 Hz | 2.80 + 0.15 |
| | | 20 Hz - 47 Hz | 1.00 + 0.15 |
| | | 47 Hz - 1 kHz | 0.16 + 0.15 |
| | | 1 kHz - 10 kHz | 0.40 + 0.20 |
| | 200.000000 mA | 10 Hz - 20 Hz | 2.80 + 0.20 |
| | | 20 Hz - 47 Hz | 1.00 + 0.20 |
| | | 47 Hz - 1 kHz | 0.20 + 0.11 |
| | | 1 kHz - 10 kHz | 0.40 + 0.20 |
| | 2.0000000 A | 10 Hz - 20 Hz | 2.70 + 0.25 |
| | | 20 Hz - 47 Hz | 0.90 + 0.30 |
| | | 47 Hz - 1 kHz | 0.35 + 0.20 |
| | | 1 kHz - 10 kHz | 0.50 + 0.25 |

1. Specifications are for 1 hour warm up, within 1 hour self-cal, aperture \geq 0.5 sec; null measurement for DCV, Ω , DCI.

2. For temperatures outside the range of 23 °C \pm 5 °C, but within 0 to 50 °C, add 0.1 \times accuracy specification per °C.

3. 20% overrange on all ranges.

4. Minimum input specified: 0.2 mA or 5% of range, whichever is greater.

| M9181A Sensitivity (typ) | | |
|---------------------------------|------------------|-----------------|
| Function | Lowest range | Sensitivity |
| DCV | 200.0000 mV | 100 nV |
| ACV | 200.0000 mV | 100 nV |
| Resistance | 20.0000 Ω | 100 $\mu\Omega$ |
| DCI | 2.000000 mA | 10 nA |
| ACI | 2.000000 mA | 1 nA |

M9182A / M9183A Technical Specifications and Characteristics

| M9182A and M9183A: Accuracy specifications \pm (% of reading + % of range) ^{1,2} | | | | | |
|---|--------------------------|------------------|-----------------------------|----------------------------|----------------------------|
| Function | Range ³ | Frequency | 24 hour 23 °C \pm 1 °C | 90 day 23 °C \pm 5 °C | 1 year 23 °C \pm 5 °C |
| DC voltage ¹⁵ | 200.0000 mV | | 0.0030 + 0.0005 | 0.0040 + 0.0008 | 0.0050 + 0.0010 |
| | 2.000000 V | | 0.0020 + 0.0002 | 0.0030 + 0.0002 | 0.0040 + 0.0003 |
| | 20.00000 V | | 0.0040 + 0.0006 | 0.0050 + 0.0007 | 0.0070 + 0.0008 |
| | 200.0000 V | | 0.0030 + 0.0002 | 0.0040 + 0.0002 | 0.0050 + 0.0003 |
| | 300.0000 V | | 0.0130 + 0.0002 | 0.0230 + 0.0003 | 0.0250 + 0.0003 |
| True RMS, AC voltage ^{4,5} (Fast RMS off) | 200.0000 mV ⁶ | 10 Hz - 20 Hz | 3.00 + 0.18 | 3.10 + 0.19 | 3.20 + 0.22 |
| | | 20 Hz - 47 Hz | 0.37 + 0.08 | 0.38 + 0.09 | 0.40 + 0.10 |
| | | 47 Hz - 10 kHz | 0.13 + 0.05 | 0.14 + 0.06 | 0.15 + 0.06 |
| | | 10 kHz - 50 kHz | 0.25 + 0.08 | 0.26 + 0.10 | 0.27 + 0.12 |
| | | 50 kHz - 100 kHz | 1.90 + 0.18 | 1.95 + 0.19 | 2.00 + 0.20 |
| | 2.000000 V | 10 Hz - 20 Hz | 3.00 + 0.10 | 3.10 + 0.11 | 3.20 + 0.13 |
| | | 20 Hz - 47 Hz | 0.37 + 0.07 | 0.38 + 0.08 | 0.40 + 0.09 |
| | | 47 Hz - 10 kHz | 0.05 + 0.05 | 0.06 + 0.06 | 0.07 + 0.06 |
| | | 10 kHz - 50 kHz | 0.32 + 0.06 | 0.33 + 0.07 | 0.35 + 0.08 |
| | | 50 kHz - 100 kHz | 1.90 + 0.08 | 2.00 + 0.09 | 2.10 + 0.10 |
| | 20.00000 V | 10 Hz - 20 Hz | 3.00 + 0.07 | 3.10 + 0.08 | 3.30 + 0.10 |
| | | 20 Hz - 47 Hz | 0.37 + 0.06 | 0.38 + 0.07 | 0.40 + 0.08 |
| | | 47 Hz - 10 kHz | 0.06 + 0.05 | 0.07 + 0.06 | 0.07 + 0.07 |
| | | 10 kHz - 50 kHz | 0.18 + 0.09 | 0.20 + 0.11 | 0.22 + 0.13 |
| | | 50 kHz - 100 kHz | 1.30 + 0.15 | 1.40 + 0.18 | 1.50 + 0.20 |
| 200.0000 V & 300.0000 V | 10 Hz - 20 Hz | 3.00 + 0.07 | 3.10 + 0.08 | 3.30 + 0.08 | |
| | 20 Hz - 47 Hz | 0.43 + 0.06 | 0.44 + 0.07 | 0.45 + 0.08 | |
| | 47 Hz - 10 kHz | 0.07 + 0.05 | 0.08 + 0.07 | 0.09 + 0.08 | |
| | 10 kHz - 50 kHz | 0.28 + 0.07 | 0.30 + 0.08 | 0.32 + 0.10 | |
| | 50 kHz - 100 kHz | 1.30 + 0.09 | 1.60 + 0.12 | 2.40 + 0.13 | |
| True RMS, AC voltage ^{4,5} (Fast RMS on) | 200.0000 mV ⁶ | 350 Hz - 800 Hz | 0.60 + 0.08 | 0.65 + 0.09 | 0.70 + 0.10 |
| | | 800 Hz - 10 kHz | 0.13 + 0.05 | 0.14 + 0.06 | 0.15 + 0.06 |
| | | 10 kHz - 50 kHz | 0.55 + 0.08 | 0.60 + 0.10 | 0.63 + 0.12 |
| | | 50 kHz - 100 kHz | 5.30 + 0.18 | 5.40 + 0.19 | 5.60 + 0.20 |
| | | | | | |
| | 2.000000 V | 350 Hz - 800 Hz | 0.93 + 0.07 | 0.96 + 0.08 | 1.00 + 0.09 |
| | | 800 Hz - 10 kHz | 0.07 + 0.05 | 0.08 + 0.06 | 0.08 + 0.06 |
| | | 10 kHz - 50 kHz | 0.62 + 0.06 | 0.65 + 0.07 | 0.70 + 0.08 |
| | | 50 kHz - 100 kHz | 5.10 + 0.08 | 5.20 + 0.09 | 5.30 + 0.10 |
| | | | | | |
| | 20.00000 V | 350 Hz - 800 Hz | 0.93 + 0.06 | 0.96 + 0.07 | 1.00 + 0.08 |
| | | 800 Hz - 10 kHz | 0.07 + 0.05 | 0.07 + 0.06 | 0.07 + 0.07 |
| | | 10 kHz - 50 kHz | 0.31 + 0.09 | 0.33 + 0.11 | 0.35 + 0.13 |
| | | 50 kHz - 100 kHz | 2.00 + 0.15 | 2.20 + 0.18 | 2.40 + 0.20 |
| | | | | | |
| 200.0000 V & 300.0000 V | 350 Hz - 800 Hz | 1.00 + 0.06 | 1.10 + 0.07 | 1.10 + 0.08 | |
| | 800 Hz - 10 kHz | 0.07 + 0.05 | 0.07 + 0.07 | 0.08 + 0.08 | |
| | 10 kHz - 50 kHz | 0.34 + 0.07 | 0.45 + 0.08 | 0.50 + 0.10 | |
| | 50 kHz - 100 kHz | 2.50 + 0.09 | 2.80 + 0.12 | 3.20 + 0.13 | |
| | | | | | |

M9182A / M9183A Technical Specifications and Characteristics (continued)

| M9182A and M9183A: Accuracy specifications \pm (% of reading + % of range) ^{1,2} | | | | | |
|---|---|--|-----------------------------|----------------------------|----------------------------|
| Function | Range ³ | Frequency, test current or burden voltage | 24 hour 23 °C \pm 1 °C | 90 day 23 °C \pm 5 °C | 1 year 23 °C \pm 5 °C |
| Resistance ^{7, 15} | 20.00000 Ω (M9183A only) | 10 mA | 0.004 + 0.004 | 0.009 + 0.004 | 0.014 + 0.005 |
| | 200.0000 Ω | 1 mA | 0.004 + 0.002 | 0.010 + 0.002 | 0.013 + 0.003 |
| | 2.000000 k Ω | 1 mA | 0.003 + 0.002 | 0.008 + 0.002 | 0.012 + 0.002 |
| | 20.00000 k Ω | 100 μ A | 0.003 + 0.002 | 0.008 + 0.002 | 0.012 + 0.002 |
| | 200.0000 k Ω | 10 μ A | 0.006 + 0.002 | 0.010 + 0.002 | 0.016 + 0.003 |
| | 2.000000 M Ω | 1 μ A | 0.018 + 0.002 | 0.030 + 0.003 | 0.040 + 0.004 |
| | 20.00000 M Ω | 100 nA | 0.120 + 0.002 | 0.130 + 0.003 | 0.200 + 0.003 |
| | 200.0000 M Ω (M9183A, 2-wire only) | 4 nA | 0.800 + 0.013 | 1.000 + 0.015 | 1.300 + 0.025 |
| | DC current ¹⁵ | 200.0000 nA (M9183A only) | < 100 μ V | 0.130 + 0.020 | 0.160 + 0.023 |
| 2.000000 μ A (M9183A only) | | < 100 μ V | 0.050 + 0.004 | 0.080 + 0.003 | 0.210 + 0.008 |
| 20.00000 μ A (M9183A only) | | < 100 μ V | 0.050 + 0.002 | 0.080 + 0.003 | 0.130 + 0.004 |
| 200.0000 μ A (M9183A only) | | < 2.5 mV | 0.052 + 0.100 | 0.070 + 0.150 | 0.100 + 0.200 |
| 2.000000 mA | | < 25 mV | 0.020 + 0.015 | 0.030 + 0.020 | 0.040 + 0.028 |
| 20.00000 mA | | < 250 mV | 0.020 + 0.002 | 0.035 + 0.003 | 0.045 + 0.003 |
| 200.0000 mA | | < 55 mV | 0.020 + 0.025 | 0.030 + 0.030 | 0.040 + 0.040 |
| 2.000000 A | | < 520 mV | 0.100 + 0.003 | 0.150 + 0.004 | 0.200 + 0.005 |
| True RMS, AC current ⁸ | 2.000000 mA ⁹ | 10 Hz - 20 Hz | 2.70 + 0.20 | 2.90 + 0.20 | 2.90 + 0.20 |
| | | 20 Hz - 47 Hz | 0.90 + 0.20 | 0.90 + 0.20 | 1.00 + 0.20 |
| | | 47 Hz - 1 kHz | 0.04 + 0.08 | 0.08 + 0.15 | 0.12 + 0.20 |
| | | 1 kHz - 10 kHz | 0.12 + 0.20 | 0.14 + 0.20 | 0.22 + 0.20 |
| | 20.00000 mA | 10 Hz - 20 Hz | 1.80 + 0.15 | 2.60 + 0.15 | 2.80 + 0.15 |
| | | 20 Hz - 47 Hz | 0.60 + 0.15 | 0.90 + 0.15 | 1.00 + 0.15 |
| | | 47 Hz - 1 kHz | 0.07 + 0.05 | 0.15 + 0.10 | 0.16 + 0.15 |
| | | 1 kHz - 10 kHz | 0.21 + 0.15 | 0.30 + 0.20 | 0.40 + 0.20 |
| | 200.0000 mA | 10 Hz - 20 Hz | 1.80 + 0.20 | 2.70 + 0.20 | 2.80 + 0.20 |
| | | 20 Hz - 47 Hz | 0.60 + 0.20 | 0.90 + 0.20 | 1.00 + 0.20 |
| | | 47 Hz - 1 kHz | 0.15 + 0.08 | 0.17 + 0.09 | 0.20 + 0.11 |
| | | 1 kHz - 10 kHz | 0.30 + 0.15 | 0.35 + 0.18 | 0.40 + 0.20 |
| | 2.000000 A | 10 Hz - 20 Hz | 1.80 + 0.20 | 2.50 + 0.23 | 2.70 + 0.25 |
| | | 20 Hz - 47 Hz | 0.66 + 0.30 | 0.80 + 0.30 | 0.90 + 0.30 |
| | | 47 Hz - 1 kHz | 0.30 + 0.19 | 0.33 + 0.19 | 0.35 + 0.20 |
| | | 1 kHz - 10 kHz | 0.40 + 0.20 | 0.45 + 0.23 | 0.50 + 0.25 |
| Frequency or period ^{10, 14} | 200 mV to 300 V | 1Hz - 20 Hz | 0.08 + 0.01 | 0.08 + 0.01 | 0.08 + 0.01 |
| | | 20 Hz - 130 Hz | 0.03 + 0.01 | 0.03 + 0.01 | 0.03 + 0.01 |
| | | 130 Hz - 640 Hz | 0.03 + 0.01 | 0.03 + 0.01 | 0.03 + 0.01 |
| | | 640 Hz - 2.5 kHz | 0.03 + 0.01 | 0.03 + 0.01 | 0.03 + 0.01 |
| | | 2.5 kHz - 40 kHz | 0.03 + 0.01 | 0.03 + 0.01 | 0.03 + 0.01 |
| | | 40 kHz - 200 kHz | 0.05 + 0.01 | 0.05 + 0.01 | 0.05 + 0.01 |
| | | 200 kHz - 300 kHz | 0.07 + 0.01 | 0.07 + 0.01 | 0.07 + 0.01 |

M9182A / M9183A Technical Specifications and Characteristics (continued)

| M9182A and M9183A: Accuracy specifications \pm (% of reading + % of range) ^{1,2} | | | | | |
|---|----------------------|----------------------------------|-----------------------------|----------------------------|----------------------------|
| Function | Range | Full scale reading or resolution | 24 hour 23 °C \pm 1 °C | 90 day 23 °C \pm 5 °C | 1 year 23 °C \pm 5 °C |
| Single shot duty cycle ¹¹ | 2 - 100 Hz | 0.02 % | 0.03 \pm 0.03 | 0.03 \pm 0.03 | 0.03 \pm 0.03 |
| [M9183A only] | 100 Hz - 1 kHz | 0.20 % | 0.03 \pm 0.30 | 0.03 \pm 0.30 | 0.03 \pm 0.30 |
| | 1 - 10 kHz | 2.00 % | 0.03 \pm 3.00 | 0.03 \pm 3.00 | 0.03 \pm 3.00 |
| Single shot pulse width ^{12, 14} | 14 μ s - 62.5 ms | 1 μ s | .01 \pm 4 μ s | 01 \pm 4 μ s | 01 \pm 4 μ s |
| [M9183A only] | | | | | |
| Capacitance ¹³ | 1000.0 pF | 1199.9 pF | 1.00 + 0.10 | 1.00 + 0.10 | 1.00 + 0.10 |
| | 10.000 nF | 11.999 nF | 1.20 + 0.05 | 1.20 + 0.05 | 1.20 + 0.05 |
| [M9183A and M9182A] | 100.00 nF | 119.99 nF | 1.00 + 0.10 | 1.00 + 0.10 | 1.00 + 0.10 |
| | 1.0000 μ F | 1.1999 μ F | 1.00 + 0.10 | 1.00 + 0.10 | 1.00 + 0.10 |
| | 10.000 μ F | 11.999 μ F | 1.00 + 0.10 | 1.00 + 0.10 | 1.00 + 0.10 |
| | 100.00 μ F | 119.99 μ F | 1.00 + 0.10 | 1.00 + 0.10 | 1.00 + 0.10 |
| | 1.0000 mF | 1.1999 mF | 1.20 + 0.10 | 1.20 + 0.10 | 1.20 + 0.10 |
| | 10.000 mF | 11.999 mF | 2.00 + 0.10 | 2.00 + 0.10 | 2.00 + 0.10 |

- Specifications are for 1 hour warm up, within 1 hour self-cal, aperture \geq 0.5 sec. Slow AC filter for AC measurements only.
- For temperatures outside the range of 23 °C \pm 5 °C, but within 0 °C to 50 °C, add 0.1 \times accuracy specification per °C.
- 20% over range on all ranges except 300 V range, 10% over range for 300 V range.
- Minimum input specified: 5 mV or 1% of range, whichever is larger.
- Signal is limited to 8x106 Volt Hz product. For example, at 32 kHz, the highest input is 250 V.
- For inputs from 5 mV to 15 mV, add 100 μ V to the specification.
- Specifications are for 4-wire resistance measurements, for 2-wire, add 1 m Ω additional error to the specification; for offset compensated ohms (M9183A only), add 0.02% of range.
- Minimum input specified: 60 μ A or 1.5% of range, whichever is larger; for inputs < 5% of full scale, add 0.02% of range.
- For inputs from 60 to 120 μ A, add 10 μ A to the specification; for inputs < 5% of full scale, add 0.1% of range.
- Minimum amplitude greater of: 100 mV, or 5 % of range for 1 Hz to 2.5 kHz, or 25 % of range for 2.5 kHz to 200 kHz , or 40% of range for 200 kHz to 300 kHz..
- Specifications are % of reading (0.03) \pm adder.
- Specifications are % of reading + time.
- Specifications apply to input signals \geq 5% of range.
- Maximum wait time for duty cycle and period is 5 seconds.
- DCV, DCI & Resistance specifications only valid with the math NULL feature enabled.

Definitions for Specifications

Specification (spec): Represents warranted performance of a calibrated instrument that has been stored for a minimum of two hours within the operating temperature range of 0 to 50 °C, unless otherwise stated, and after a one hour warm-up period. The specifications include measurement uncertainty. Data represented in this document are specifications unless otherwise noted.

Typical (typ): Represents characteristic performance, which 80% of the instruments manufactured will meet. This data is not warranted, does not include measurement uncertainty, and is valid only at room temperature (approximately 25 °C).

Nominal (nom): The expected mean or average performance, or an attribute whose performance is by design, such as the 50 Ω connector. This data is not warranted and is measured at room temperature (approximately 25 °C).

Measured (meas): An attribute measured during the design phase for purposes of communicating expected performance, such as amplitude drift vs. time. This data is not warranted and is measured at room temperature (approximately 25 °C).

Note: All graphs contain measured data from several units at room temperature unless otherwise noted.

M9182A / M9183A Technical Specifications and Characteristics (continued)

| M9182A and M9183A Sensitivity (nom) | | |
|-------------------------------------|-------------------|-----------------|
| Function | Lowest Range | Sensitivity |
| DCV | 200.0000 mV | 0.1 μ V |
| ACV | 200.0000 mV | 0.1 μ V |
| Resistance (M9183A) | 20.00000 Ω | 10 $\mu\Omega$ |
| Resistance (M9182A) | 200.0000 Ω | 100 $\mu\Omega$ |
| DCI (M9183A) | 200.0000 nA | 0.1 pA |
| DCI (M9182A) | 2.000000 mA | 10 nA |
| ACI | 2.000000 mA | 1 nA |
| Capacitance | 1000.0 pF | 0.1 pF |

| M9182A and M9183A temperature accuracy (spec) ¹ | | | | | |
|--|-----------------|-----------------------------|-------------|-----------------------|--|
| Temperature function | Type | R ₀ (Ω) | Sensitivity | Range/max temperature | 1 year 23 °C \pm 5 °C |
| RTD temperature measurement ^{2,3} | pt385 | 100 Ω , 200 Ω | 0.01 °C | -150 to 650 °C | \pm 0.06 °C |
| | | 500 Ω , 1 k Ω | 0.01 °C | -150 to 650 °C | \pm 0.03 °C |
| | Cu (Copper) | Less than 12 Ω | 0.01 °C | -100 to 200 °C | \pm 0.18 °C at \leq 20 °C \pm 0.05 °C otherwise |
| | | Higher than 90 Ω | 0.01 °C | -100 to 200 °C | \pm 0.10 °C at \leq 20 °C \pm 0.05 °C otherwise |
| Thermocouple temperature measurement ^{4,5} | B | NA | 0.01 °C | 2200 °C | \pm 0.38 °C |
| | E | NA | 0.01 °C | 1200 °C | \pm 0.035 °C |
| | J | NA | 0.01 °C | 2000 °C | \pm 0.06 °C |
| | K | NA | 0.01 °C | 3000 °C | \pm 0.07 °C |
| | N | NA | 0.01 °C | 3000 °C | \pm 0.10 °C |
| | R | NA | 0.01 °C | 2700 °C | \pm 0.25 °C |
| | S | NA | 0.01 °C | 3500 °C | \pm 0.35 °C |
| | T | NA | 0.01 °C | 550 °C | \pm 0.06 °C |
| Thermistor ³ | 2.25 k Ω | NA | 0.01 °C | -80 to 150 °C | \pm 0.1 °C |
| | 5 k Ω | NA | 0.01 °C | -80 to 150 °C | \pm 0.1 °C |
| | 10 k Ω | NA | 0.01 °C | -80 to 150 °C | \pm 0.1 °C |

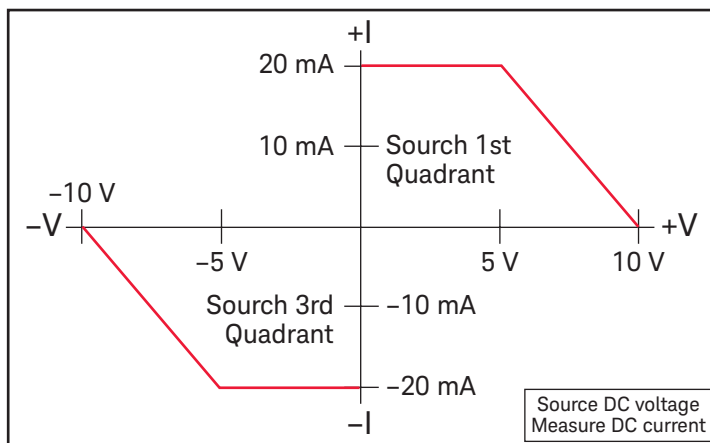
- Specifications are for one hour warm up, within one hour self-cal, aperture \geq 0.5 sec.
- 4-wire RTD measurement, R₀ variable 1 Ω to 7 k Ω .
- For total measurement accuracy, add temperature probe error.
- For total measurement accuracy, add thermocouple error and cold junction compensation.
- DMM linearization temperature range may be greater than that of the thermocouple device.

M9182A / M9183A Technical Specifications and Characteristics (continued)

Source-Measure [(spec) unless otherwise stated]]

| M9183A source DC voltage, measure DC voltage | | |
|--|------------------|--------------|
| Parameter | Closed Loop | Open Loop |
| DC voltage source (output) range | +10 to -10 V | +10 to -10 V |
| DC source sink current at 5 V output | 5 mA | 5 mA |
| DAC resolution (nom) | 18 bits /12 bits | 12 bits |
| DC voltage source accuracy 1 Year, 23°± 5° C | 0.015% ± 0.0004 | 1.00% ± 0.04 |
| Settling time (typ) | 100 ms/1 ms | 1 ms |
| Source resistance (nom) | 200 ohms | 200 ohms |

| M9183A source DC voltage, measure DC current | |
|---|----------------------|
| DC voltage source (output) range | -10.000 to +10.000 V |
| DC current measurement range | 0 to ± 20 mA |
| Voltage resolution (nom) | 5 mV |
| Voltage source accuracy 1 Year, (23 °C ± 5 °C) ^{1,2,3,4} | 2.0% ± 0.4% |
| Settling time (typ) | 100 ms |
| DC current measurement accuracy | 0.1% + 0.005% |



| M9183A source DC current, measure DC voltage | | | |
|--|--------------------|---------------|---|
| DC voltage measurement range | | 0 to ± 2.0 V | |
| Current output | Compliance voltage | Minimum Level | Source Accuracy 1 year, (23 °C ± 5 °C) ^{1,2,3} |
| < 1.25 µA | 4.2 V | 10 nA | 1% + 1% |
| < 12.5 µA | 4.2 V | 50 nA | 1% + 1% |
| < 125 µA | 4.2 V | 100 nA | 1% + 0.5% |
| < 1.25 mA | 4.2 V | 1 µA | 1% + 0.5% |
| < 12.5 mA | 1.2 V | 10 µA | 1% + 0.5% |

1. Specifications are for one hour warm up, within one hour self-cal, slow AC filter.
2. For temperatures outside the range of 23 °C ± 5 °C, but within 0 °C to 50 °C, add 0.1 × accuracy specification per °C.
3. Repetitive reading at an aperture of 133 ms or higher.
4. If DCV source > 6 V, then add current * 4 ohms; if DCV source > 8 V, then add current * 30 ohms.

M9182A / M9183A Technical Specifications and Characteristics (continued)

Triggering Characteristics

The M9182A and M9183A have advanced triggering capabilities that exceed those found on other digital multimeters. Advanced triggering enables you to obtain the signal you need and accurately measure it, in a variety of applications.

| External hardware trigger | | |
|--|--|---|
| Trigger input voltage level range (at DIN 7 connector) | +3 to +15 V activates the trigger | |
| Minimum trigger pulse width | Aperture + 50 μ s | |
| Trigger input impedance | 3 k Ω | |
| Edge | Selectable positive or negative edge | |
| PXI bus trigger inputs | | |
| Trigger input voltage level range (via PXI backplane) | CMOS level (see PXI standard) | |
| Minimum trigger pulse width | Aperture + 50 μ s | |
| Edge | Selectable positive or negative edge | |
| Trigger features | | |
| Trigger sources | Immediate, PXI trigger , external DIN connector, analog threshold trigger source | |
| Trigger delay | Measurement delay | 50 μ s to 15 s |
| [Auto delay (default delay) ensures 1st reading accuracy in most configurations) | Resolution | 1 μ s to 65 ms and 16 μ s above 65 ms |
| Reading storage | Circular buffer - 80 readings | |
| Multi Sample Mode (DCV and DCI functions only) | Aperture range | 2.5 μ s to 160 ms (M9183A) 130 μ s to 160 ms (M9182A) |
| | Maximum read interval range | 1sec for apertures \geq 625 μ s, else 65 ms |
| | Reading per trigger | Up to 80 readings (maximum of 78 pre-triggers or a maximum of 80 post triggers) |
| | Trigger sources | PXI trigger, external DIN connector, and analog threshold (accuracy within 5% of range) |

Measurement Characteristics

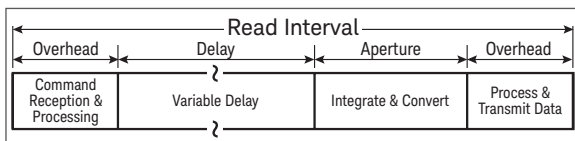
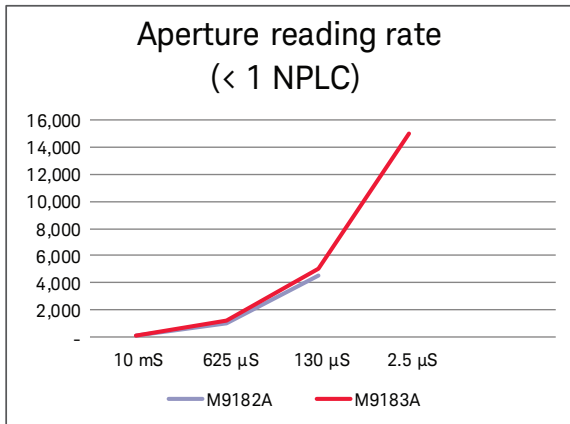
M9181A Resolution vs. Aperture and Reading Rate for DCV, DCI, Ω

| Measurement aperture | Maximum readings per second | Resolution |
|----------------------|-----------------------------|---------------------|
| 1.28 s | 0.8 | 6½ digits (21 bits) |
| 160 ms | 6 | 6 digits (20 bits) |
| 20 ms | 45 | 5½ digits (18 bits) |
| 10 ms | 85 | 5 digits (17 bits) |
| 5 ms | 150 | 4½ digits (16 bits) |

M9182A / M9183A Resolution vs. Aperture and Reading Rate for DCV, DCI, Ω

| Measurement aperture | Maximum readings per second | Resolution |
|----------------------|--------------------------------------|---------------------|
| 10 ms | 98 | 6½ digits (22 bits) |
| 625 μ s | 1,200 | 5½ digits (18 bits) |
| 130 μ s | 4,500 | 4½ digits (14 bits) |
| 2.5 μ s | 15,000 (M9183A only) ¹ | 4½ digits (14 bits) |

- 15,000 readings/second represent a typical maximum with a measurement aperture of 2.5 μ s. Results will vary, depending on what PC hardware, PXI hardware, and driver are used.



Time frame of a single measurement

Minimum read interval = 66 μ s (M9183A)

Minimum read interval = 222 μ s (M9182A)

Measurement Characteristics (continued)

Transaction Speed

Transactional I/O speed is a single reading measurement. This is important when you are taking many single measurements with the DMM. The M9183A delivers the highest transactional measurement speed in its class. These fast readings, up to 15,000 readings per second with a read interval rate of 66 μ s, provides the lowest latency, translating into higher test-system throughput and lower cost of test per unit tested.

Variable delay can be programmed to allow fully settled readings in most configurations.

System Reading and Throughput Rates (M9182A/3A)

| Switching ranges within a function | Aperture (A) | Range change time (ms) |
|--|----------------|--------------------------|
| DCV | $A \leq 20$ ms | $(A \times 0.2) + 15$ |
| | $A > 20$ ms | $A + 15.6$ |
| Resistance (2-wire or 4-wire) | $A < 33$ ms | $(A \times 0.05) + 15.5$ |
| | $A \geq 33$ ms | $A + 13$ |
| DCI (200 mA or 2 A to any other range) | $A \leq 40$ ms | 4.2 |
| | $A > 40$ ms | 15.7 |
| DCI (all other ranges) | All apertures | 1 |
| Capacitance | All apertures | 12 |

| Switch between functions | Aperture (A) | Function change time (ms) |
|---------------------------|-----------------------------------|---------------------------|
| DCV | $A < 16$ ms | 15.6 |
| | $A \geq 16$ ms | $A + 25$ |
| Resistance to DCI | $A < 16.66$ ms | 7.8 |
| | $16.66 \text{ ms} \leq A < 40$ ms | $A \times 0.65$ |
| | $40 \text{ ms} < A < 66.66$ ms | 7.8 |
| | $A \geq 66.66$ ms | $(A \times 0.51) + 45$ |
| DCV to capacitance | $A < 33.33$ ms | 23.4 |
| | $A \geq 33.33$ ms | $(A \times 0.65) + 50$ |
| Resistance to capacitance | $A \leq 33.33$ ms | 23.4 |
| | $33.33 \text{ ms} < A < 80$ ms | $(A \times 2) + 35$ |
| | $80 \text{ ms} \leq A < 160$ ms | 23.4 |
| | $A \geq 160$ ms | 160 |

Measurement Characteristics (continued)

| DC voltage | |
|-----------------------------------|---|
| Measurement method | Delta-sigma A/D conversion |
| Input resistance | 200 mV, 2.0 V ranges: >10 G Ω with typical leakage of < 50 pA; M9181A: 20 V, 200 V ranges: 10.0 M Ω M9182A/3A: 20 V, 200 V, 300 V ranges: 10.0 M Ω |
| Input isolation | M9181A: 240 V from Earth ground M9182A/3A: 330 VDC, 250 VAC from Earth ground |
| Input overvoltage protection | M9181A: 300 VDC on voltage inputs M9182A/3A: 330 VDC all ranges |
| DCV noise rejection | M9181A: Normal mode rejection at 50, 60, or 400 Hz \pm 0.5%; > 90 dB (apertures \geq 0.160 s); CMRR (1 k Ω lead imbalance) \geq 100 dB M9182A/3A: Normal mode rejection at 50, 60, or 400 Hz \pm 0.5%; > 95 dB (apertures \geq 0.160 s); CMRR (1 k Ω lead imbalance) \geq 120 dB |
| True RMS AC voltage | |
| Measurement method | M9181A: AC coupled (10 Hz to 100 kHz) true RMS – measures the AC component only. Analog RMS DC converter. M9182A/3A: AC coupled (10 Hz to 100 kHz) true RMS – measures the AC component of an input waveform that consists of AC and DC components. |
| Crest factor | Maximum crest factor of 4 at full scale, 7 at 10% of range |
| Input impedance | 1 M Ω , in parallel with < 300 pF |
| Settling time | < 0.5 sec to within 0.1% of final value Fast RMS (M9182A/3A): < 0.05 sec to within 0.1% of final value |
| Peak input | 8 x 10 ⁶ volt Hz product (example: 250 V @ 32 kHz) |
| Input overvoltage protection | M9181A: 250 VAC on voltage inputs M9182A/3A: 330 VAC all ranges |
| ACV noise rejection | Common mode rejection at 50 Hz or 60 Hz; 1 k Ω imbalance in either lead > 60 dB |
| Resistance | |
| Measurement method | Selectable 2-wire or 4-wire. Current source referenced to LO output |
| Offset compensation (M9183A only) | All ranges, use with apertures > 5 ms Voffset + (I*R) < 2.2 V for ranges \geq 2 k Ω Voffset + (I*R) < 0.22 V for ranges < 2 k Ω |
| Maximum test voltage | M9181A: 240 mV for 200 Ω ranges; 2.4 V for 20 k Ω to 20 M Ω ranges M9182A/3A: 240 mV for 20 Ω and 200 Ω ranges; 2.4 V for 20 k Ω to 20 M Ω ranges M9183A only: 1.0 V for 200 M Ω range |
| Maximum lead resistance (4-wire) | 50 k Ω for 200 k Ω , 2.0 M Ω , and 20 M Ω ranges; 5 k Ω for 20 k Ω range 500 Ω for 200 Ω and 2 k Ω ranges; 50 Ω for 20 Ω range |
| Input protection | M9181A: 300 V on all ranges M9182A/3A: 330 V on all ranges |
| DC current | |
| Shunt resistance | 10 Ω for 2 mA and 20 mA, 0.1 Ω for 200 mA and 2 A; Virtual zero shunt for 200 μ A, 20 μ A, 2 μ A, and 200 nA range (M9183A only) |
| Input protection | Protected with 2.5 A, 250 V fast blow fuse |
| True RMS AC current | |
| Measurement method | AC coupled true RMS measurement (measures the AC component only.) Analog RMS DC converter. |
| Shunt resistance | 10 Ω for 2 mA and 20 mA, 0.1 Ω for 200 mA and 2 A |
| Input protection | Protected with 2.5 A, 250 V fast blow fuse |

Measurement Characteristics (continued)

| Frequency and period (M9182A and M9183A) | |
|--|--------------------------------|
| Measurement method | Direct (conventional) counting |
| Input impedance | 1 M Ω with < 300 pF |
| Sensitivity (130 Hz) | .001 Hz |

| Totalizer (M9183A only) | |
|-------------------------|---------------------------------|
| Active edge polarity | Positive or negative transition |
| Maximum count | 10,000,000,000 |
| Allowed rate | 1 to 30,000 events per second |
| Threshold | Set threshold DAC |
| Accuracy | ± 2 counts |

| Capacitance (M9182A and M9183A) | |
|---------------------------------|--|
| Measurement method | Differential charge balance: variable currents used to stimulate dV/dt response. |
| Connection type | 2-wire |

| Environmental and physical characteristics | | |
|--|--|--|
| Temperature range | Operating -10° to 55 °C Non-operating -40 ° to +85 °C | |
| Relative humidity | Operating to 80% at 40 °C Storage to 95% at 40 °C | |
| Max operative altitude | 2000m (10,000 feet) | |
| Connectors | V HI*, 2-wire Ω IN, DCV OUT V LO*, 2-wire Ω IN, DCV OUT I HI*, 4-wire Ω IN I LO*, 4-wire Ω IN Sync OUT** External Trigger IN** Trigger and Sync common** | Sheathed banana jack Sheathed banana jack Sheathed banana jack Sheathed banana jack DIN 7, pin 2 DIN 7, pin 7 DIN 7, pin 4 |
| Safety | M9181A: Complies with IEC 61010-1, CAT II 240 V, pollution degree 2 M9182A/M9183A: Complies with IEC 61010-1, CAT II 300 V, pollution degree 2 | |
| EMC | Complies with EN61326-1 Industrial Environment | |
| Warm-up time | 1 hour | |

* Do not connect the V HI and V LO or I HI and I LO connectors to anything when the measurement function does not utilize those connectors.

** M9182A & M9183A only

| Physical characteristics | |
|--------------------------|-----------------------------------|
| Dimensions | 3U/1-slot PXI/CompactPCI standard |
| Weight | 0.5 kg (1 lb.) |

| Power dissipation: | |
|--------------------|-------------|
| +5 V | Total power |
| 300 mA | 1.5 W max |

Configuration

Hardware

| Model | Description |
|--------------------|---|
| M9181A | PXI 6½ digit multimeter, basic features |
| M9182A | PXI 6½ digit multimeter, high performance |
| M9183A | PXI 6½ digit multimeter, enhanced performance |
| DMM units include: | Getting started guide, software drivers, user and service documentation (on CD ROM), Keysight I/O libraries |

Software

| Model | Description |
|--|---|
| Supported Operating Systems | Microsoft Windows XP (32-bit), Microsoft Windows Vista (32/64-bit), Microsoft Windows 7 (32/64-bit) |
| Standard Compliant Drivers | IVI-C, IVI-COM, LabVIEW |
| Supported Application Development Environments (ADE) | VisualStudio (VB.NET, C#, C/C++), LabVIEW, MATLAB, VEE |
| Keysight IO Libraries | Includes: VISA Libraries, Keysight Connection Expert, IO Monitor |

Calibration and Warranty

Advantage services: calibration and warranty

Keysight Advantage Services is committed to your success throughout your equipment's lifetime.

Calibration

| | |
|-------------|---|
| R-50C-011-3 | Yearly calibration, for 3 years |
| R-50C-011-5 | Yearly calibration, for 5 years |
| R-50C-021-3 | Yearly ANSI Z540-1-1994 calibration, for 3 years (M9182A & M9183A only) |
| R-50C-021-5 | Yearly ANSI Z540-1-1994 calibration, for 5 years (M9182A & M9183A only) |

Warranty

Standard warranty is 1 year

Accessories

| Model | Description |
|--------|---------------|
| 34138A | Test lead set |

Related products

| Model | Description |
|--------|--|
| M9018A | 18-slot PXIe chassis |
| M9021A | PCIe cable interface to an external system controller |
| M9036A | Embedded controller |
| M9101A | PXI high-density multiplexer, 64 channels, reed relays |
| M9103A | PXI high-density multiplexer, 99 channels, armature relays |
| M9120A | PXI high-density matrix switch, 4x32, armature relays |
| M9121A | PXI high-density matrix switch, 4x64, reed relays |

www.keysight.com/find/pxi-dmm

Learn more at: www.keysight.com

For more information on Keysight Technologies' products, applications or services, please contact your local Keysight office. The complete list is available at: www.keysight.com/find/contactus

