

Keysight N6841A

RF Sensor for Signal Monitoring Networks

Data Sheet



## Key Features

- Environmentally rugged IP67-rated weatherproof enclosure. Sealed unit with no moving internal parts
- Small footprint for ease of setup and teardown
- Wideband RF receiver with 20 MHz to 6 GHz frequency range
- Digital IF bandwidth adjustable up to 20 MHz
- Signal LOOKback memory (4.8 secs at 20 MHz BW)—enables reliable detection, processing and location of short duration signals or interference
- I/Q streaming up to 2 MHz bandwidth for recording or off board signal processing
- Integrated GPS for sensor location and time synchronous applications
- High precision measurement synchronization and time-stamping
- AM/FM demodulated audio streaming
- Two Type-N RF input ports (switched) for multiple antennas
- Well documented API for user programming and application development
- Wide range of Sensor applications to meet your specific monitoring, analysis or location requirements
- Embedded Application support for autonomous spectrum monitoring or “leave behind” use model

“I’ve got bursting interferers that need to be reliably detected, classified, identified and located. I’ve already done the easy ones with my older generation equipment...”



## Overview

The Keysight Technologies, Inc. N6841A RF Sensor represents an entirely new concept in spectrum monitoring. Communication signals have evolved dramatically and continue to do so as new and emerging wireless standards are defined and deployed. These new generation signals are wider bandwidth, more complex, time variant and low power. Traditional methods of monitoring communication signals from outside the city limits, a crowded vehicle or walking with a handheld analyzer just don't work well on these new standards or today's interference problems.

The Keysight N6841A RF Sensor offers a cost effective solution to placing a fully capable RF monitoring station where you need it, when you need it for as long as you need it, without complex siting constraints or physical infrastructure.

### Use Models for RF Sensors

- Spectrum survey with signal classification and database operations
- Interference detection, collection, classification, identification and location
- Band Clearing/spectrum occupancy/utilization monitoring
- Border or regional area RF monitoring and emitter geolocation
- Range monitoring
- Spectrum awareness associated with RF testing
- Enforcing your organization's spectrum policy

### Customers

- Military and Intelligence operations
- Frequency Regulatory Agencies
- Mobile Service Providers
- Government Range Managers
- Spectrum/Frequency Managers
- RF Test Managers
- Anyone monitoring or working with "off the air" RF signals

### Measurements you can make with the RF Sensor and its applications

- 24/7 Real time remote spectrum monitoring and analysis from the comfort of your office
- High speed spectral search and signal isolation
- I/Q recording and signal classification, demodulation and decoding
- Analog and digital signal analysis
- Comprehensive ITU signal measurements
- Emitter location
- Custom applications using the Sensor Access Library (SAL) API



## Deployments

The N6841A RF Sensor has a weatherproof and dustproof IP67-rated (Standard IEC 60529 International Protection 67) enclosure plus a wide operating temperature range to withstand harsh environments without additional expensive protective enclosures. The unit is conductively cooled, silent and contains no moving parts. It operates over a temperature range of  $-15^{\circ}\text{C}$  to  $55^{\circ}\text{C}$ . The range can be extended by use of commercially available enclosures that provide heat and ventilation as needed for extreme temperature conditions.

This receiver has a small footprint with no external switches or status indicators making it extremely discreet. The low-profile form factor offers many mounting options, including tripod, roof-top, pole-top, rack-mount, vehicle-mount or man-pack deployments. Relative to other solutions, the N6841A RF Sensor requires a minimum of installation engineering, and is likely to gain easy approval from building managers. It is also very well suited to temporary installations.

On-board diagnostics include complete self-test of the internal RF signal path and a watchdog reset timer. This reduces the need for on-site troubleshooting. Installation and configuration of the RF sensor is simple with only RF input, GPS antenna (optional), power and network connections.

More detailed information regarding installation is provided in the N6841A Installation Guide (Publication Number N6841-90002).

### Antennas

The N6841A RF Sensor can be used with any passive or active antenna element. A specific antenna is not stipulated for use with the RF Sensor to ensure maximum flexibility of the solution. The new Keysight N6850A Antenna has excellent broadband omni-directional characteristics and provides good coverage to make the measurements needed without excessive expense or additional power.

### Power considerations

The N6841A RF Sensor is powered by DC voltage ranging from 15 to 24VDC and it draws less than 30W. Option SP1 provides a 120/240 VAC power supply suitable for indoor (protected) installations. Off-the-shelf batteries are available from a number of suppliers that can power the RF Sensor for up to eight hours. There are also power supplies rated for outdoor use available commercially. The RF Sensor ships with an extra power connector for use with an alternate power source.

### Network connections

Many times, a wired Internet connection is not possible for the ideal RF Sensor location. In these cases, either a 3G or 4G modem, mesh radio network, or Wi-Fi backhaul may be an option. Standard Wi-Fi radios with directional antennas can easily service the data connection to an RF Sensor over 1 to 2 km. If greater distances are needed, a cellular modem provides the freedom to site the sensor anywhere in the cellular coverage area. If wired Ethernet is available for your installation, shielded cable is highly recommended to reduce the chance of interference.

### Physical mounting

The N6841A RF Sensor ships with a complete mounting kit for attachment to a rack, wall or pole. The mounting bracket includes provision for security locks, attachment of the GPS antenna and the RF Sensor. Aside from the RF Antenna, only one connection to the pole is required for a new RF monitoring station.

### Multiple sensors

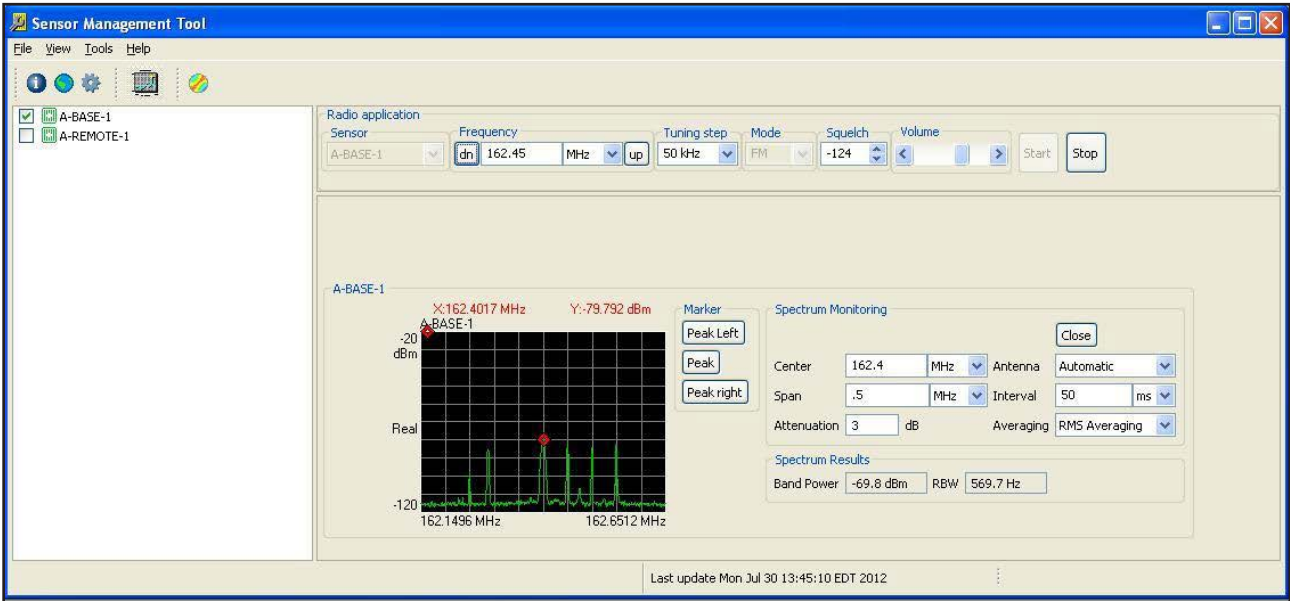
One of the benefits of deploying multiple sensors is improved RF detection range and the ability to make time synchronous I/Q and spectral measurements. This capability opens the door to emitter location and direction finding applications, propagation studies and other applications. N6841A RF Sensors can be synchronized using two different methods: GPS (for outside deployments) and IEEE-1588 (for indoor deployments or wherever GPS may



# Sensor Software Applications

## Sensor Management Tool (SMT)

The N6841A RF Sensor ships with the latest release of SMT. This application provides the user with a quick and easy way of setting up the RF Sensor remotely on their network, connecting, configuring and managing the sensor network. SMT also provides health and status monitoring of each sensor as well as a simple Spectrum Viewer and Radio application. This software is also available for download at [www.keysight.com/find/RFsensor](http://www.keysight.com/find/RFsensor)



The screenshot displays the 'Sensor Management Tool' window with the 'Status' tab selected. The table lists the status of all sensors, including their current status, location, last check-in, timesync, SMS offset, up time, and availability.

All Sensors	Status	Location	Last check-in	Timesync	SMS Offset	Up Time	Availability
A-BASE-1	CurrentStatus, REL 2.0.2, BUILD 2004, FPGA 11112916	E, 97 m	2012-07-30 15:06:12.0	GPS, Var: 8.54e-17...	1.6 s	34 days 11:04:32, boot count: 23	Unlocked
A-REMOTE-1	CurrentStatus, SMS 148.5.244.154, REL 2.0.2, BUILD 2010, FPGA 11112916	E, 94 m	2012-07-30 15:05:51.0	GPS, Var: 9.50e-17...	1.6 s	25 days 05:49:41, boot count: 31	Unlocked

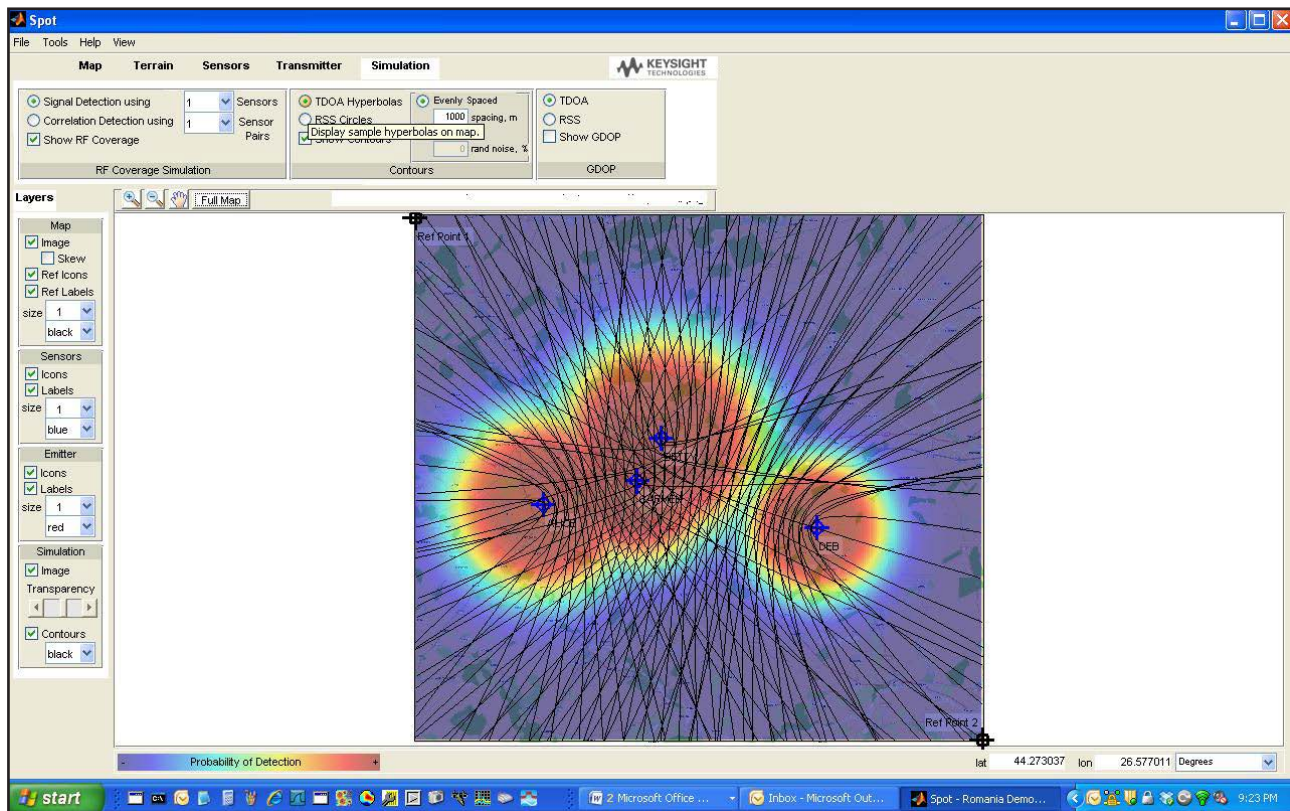
A status bar at the bottom indicates 'Last update Mon Jul 30 15:06:12 EDT 2012'.



## Sensor Software Applications (Continued)

### Sensor Placement and Optimization Tool (SPOT)

SPOT is supplied with SMT and is an invaluable tool for planning sensor deployments. SPOT allows a map image to be imported and calibrated. It then simulates the RF coverage that can be expected from the exact locations selected for the RF Sensor network. SPOT can determine how well the sensor network will perform against a radio transmitter operating at a specific center frequency, bandwidth and power output. Each sensor location is defined not only by its latitude and longitude, but also by elevation, antenna pattern, pre-amplifier effects as well as other parameters. SPOT also provides insight into the effectiveness of the sensor geometry in performing geolocation measurements. GDOP and lines of constant time or power difference can be displayed to aid in system design.

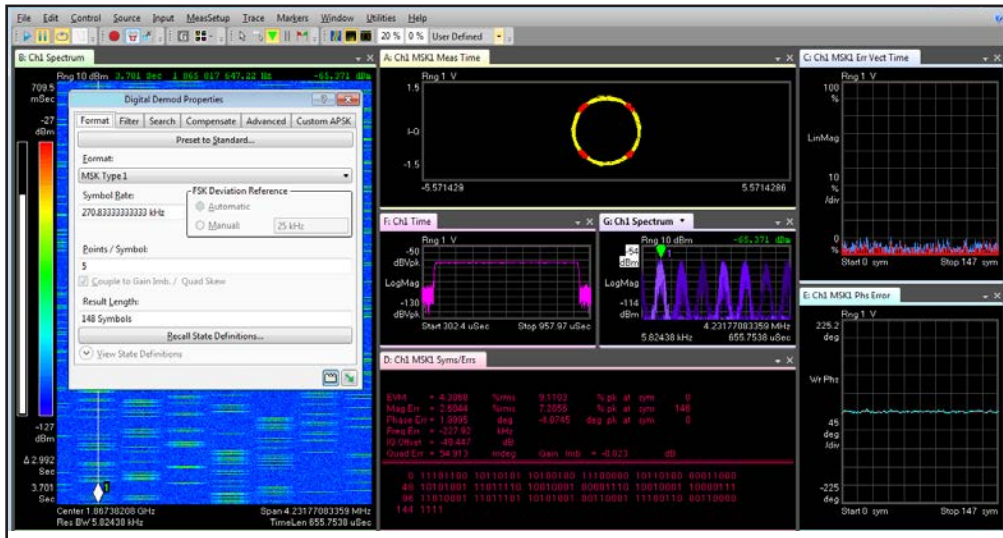
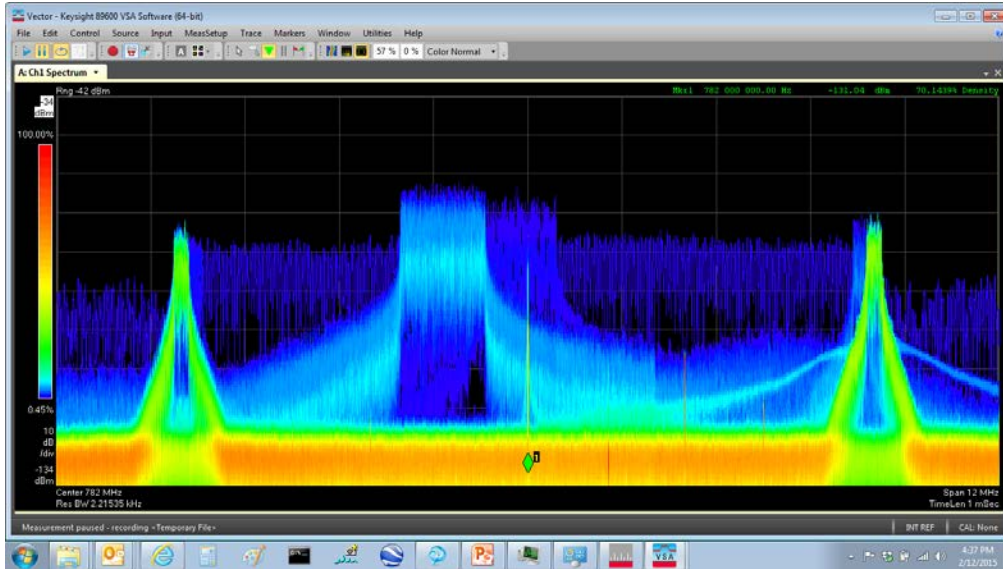




## Sensor Software Applications (Continued)

### Vector Signal Analysis (VSA)

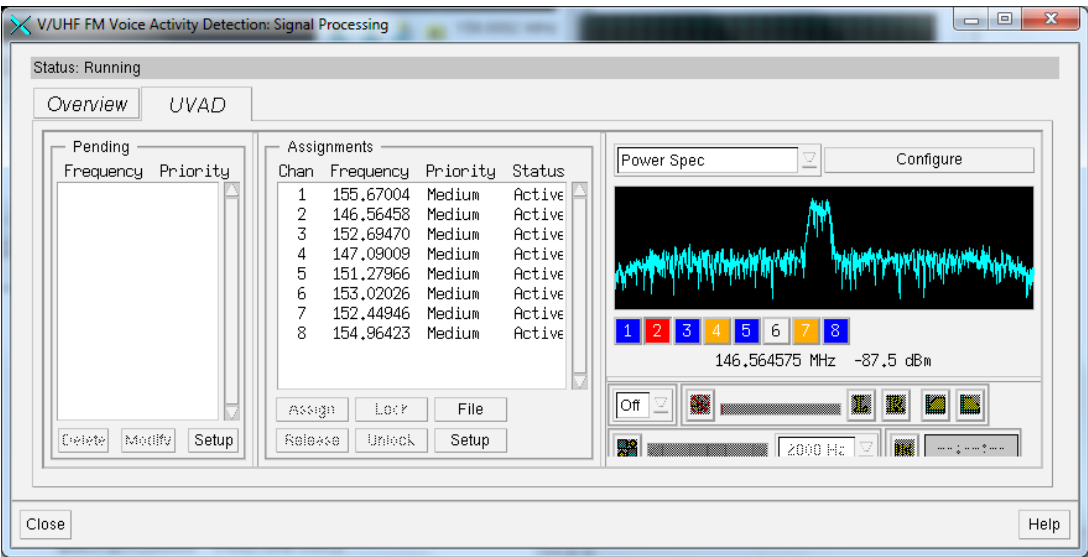
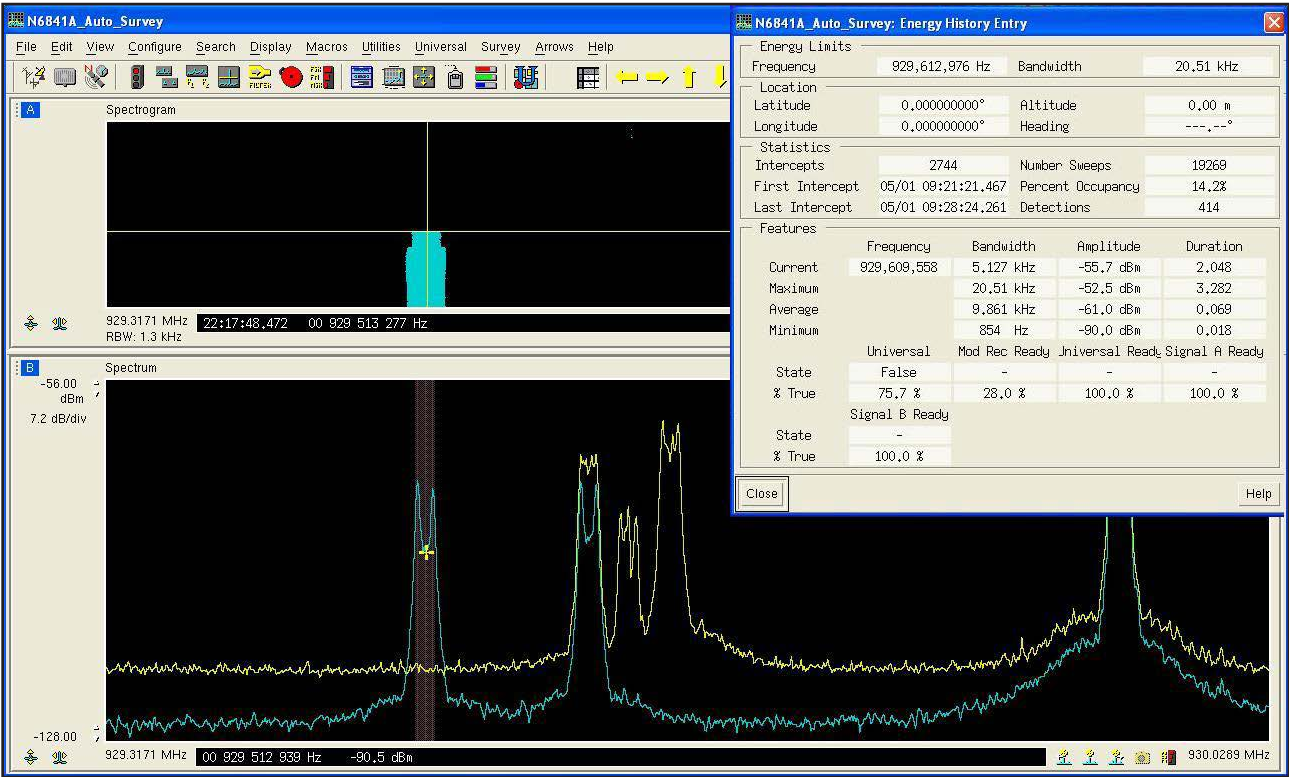
Keysight's VSA software is an industry standard used throughout the wireless communications and aerospace/defense industries for collection and processing of all forms of RF signals. It has an extensive library of wireless communications demodulators and decoders. The VSA software will turn the N6841A RF Sensor into a world class signal collection and analysis tool that can be operated literally from across the world. Additionally, VSA software is referenced in Recommendation ITU-R SM.1600, "*Technical Identification of Digital Signals*" as a valuable tool for collection of IQ data and flexible modulation analysis.



## Sensor Software Applications (Continued)

### Signal Surveyor 4D

This application provides high speed spectral search, advanced energy detection and signal isolation algorithms. Depending on the option set, signal classification and automated modulation recognition routines are also available. Automation of search, collection, classification and location tasks are possible with this powerful application. For a more detailed description of Signal Surveyor, visit [www.keysight.com/find/N6820ES](http://www.keysight.com/find/N6820ES)



With Release 4.1.0 of Signal Surveyor 4D, users will have more direct control over the Digital Down Converters and the option to purchase multiple DDC's (using option N6841A-MFP). This option will provide up to eight DDC's with bandwidths up to 200 kHz.





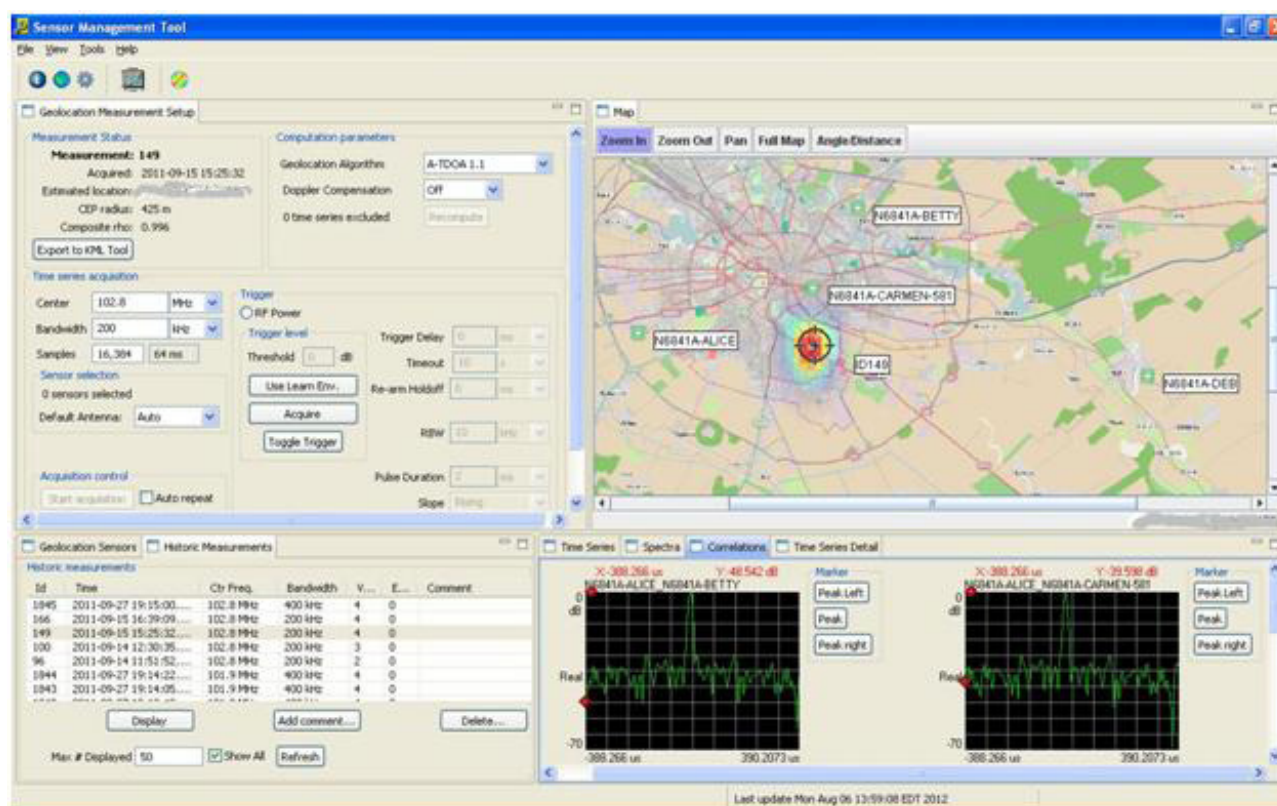
## Sensor Software Applications (Continued)

### Keysight GEO Server Software (GEO)

GEO is a licensed application that embeds within SMT and enables the user to easily make geolocation measurements on signals of interest using either time or power based triggering. This application offers three different geolocation algorithms:

- Time Difference of Arrival (TDOA)
- Received Signal Strength (RSS)
- Hybrid (an adaptive algorithm that uses both time and power information)

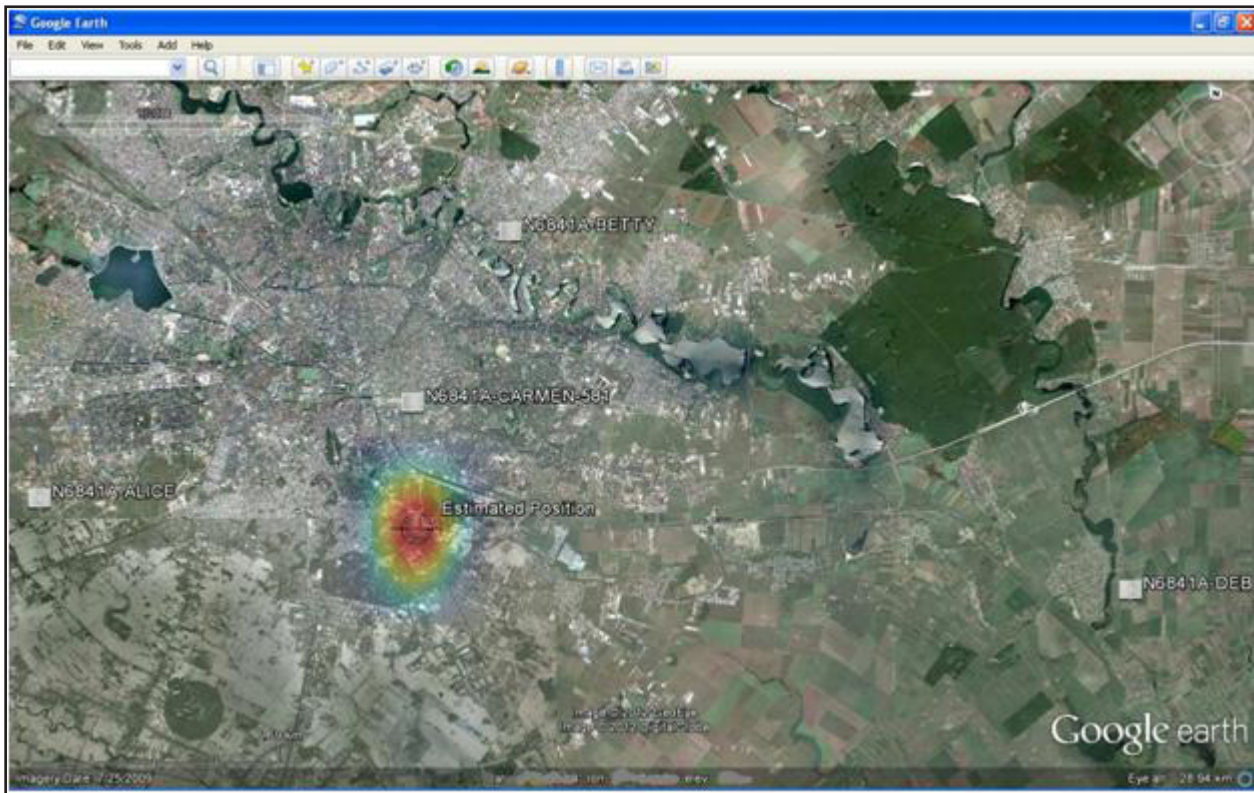
GEO makes measurements either manually or automatically when integrated with Signal Surveyor. The results (including the I/Q data) are stored in a signals database to allow the user to revisit the geolocation measurements, try different algorithms and include or exclude data from any of the sensors used in the original measurement.



## Sensor Software Applications (Continued)

### N6854A to KML software

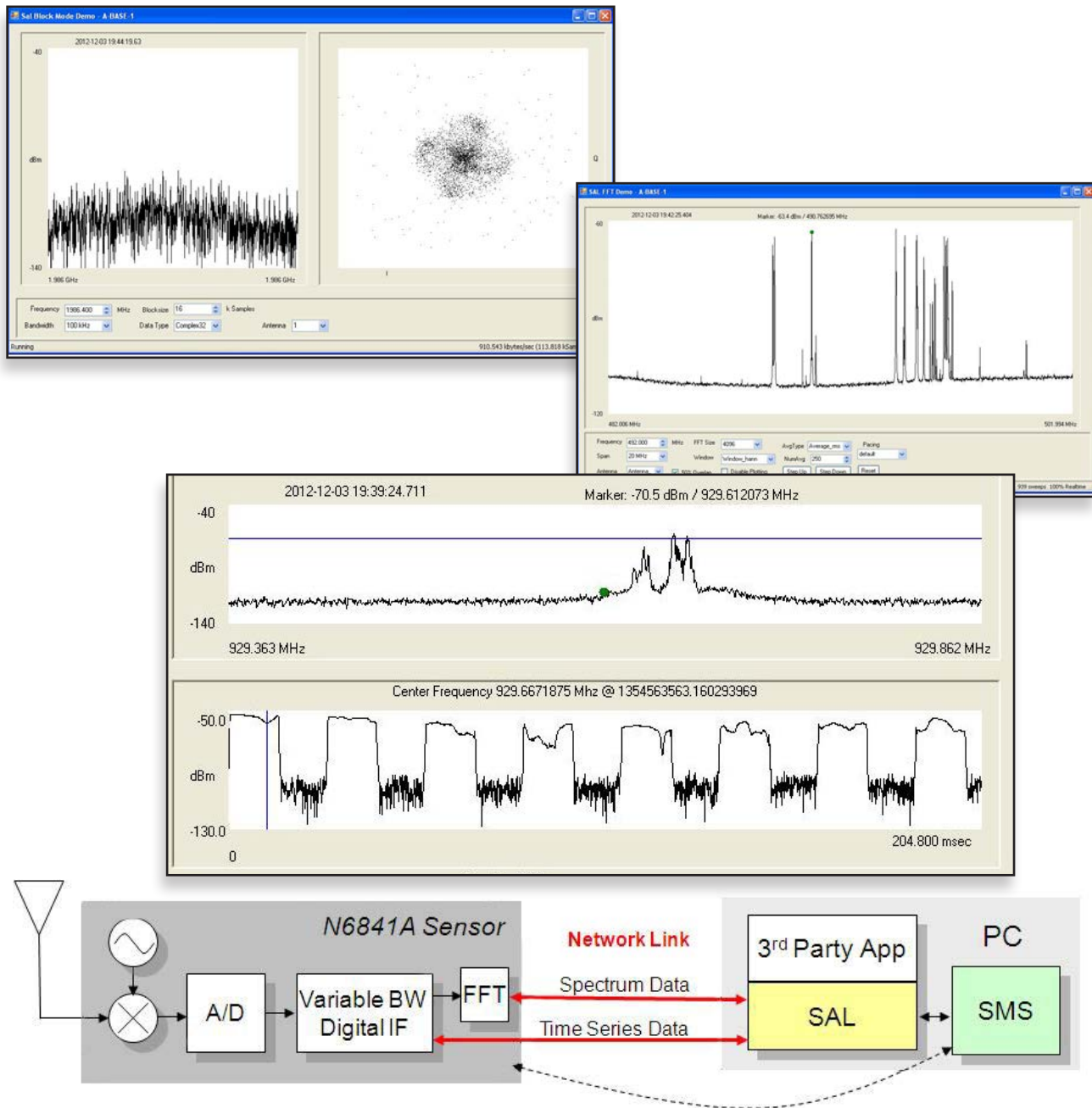
Included with GEO is a KML export tool which can refine the location results further and display them in commonly used geographic information systems. This powerful Geo-Analytics software package is an essential part of any modern spectrum monitoring system.



## Sensor Software Applications (Continued)

### User-defined enterprise software applications

Some customers have developed monitoring or location algorithms that serve very specific needs, but need rugged and reliable receiver hardware that will support fixed, mobile and temporary installations. The Keysight Sensor Access Library (SAL) provides a comprehensive API that allows programmers to interface the N6841A into an existing enterprise system. SAL offers over 50 callable routines that provide access to FFT, I/Q and audio data in single or multiple (synchronized) measurements. Full command and control of the RF Sensor is possible from any third party Windows application.



## Configuration and Ordering Information

Part number	Description
<b>RF sensor hardware</b>	
N6841A	RF Sensor Includes SMT, SPOT, KML software, connector and mounting kit
N6841A-GPS	Adds GPS capability, includes cable and active antenna
N6841A-SP1	Adds 120/240 VAC power adapter (indoor mount only)
N6841A-GEO	Geolocation enabler
N6841A-MFP	Multiple DDC enabler (requires SMT version 2.0.5 or later)
<b>Signal surveyor</b>	
N6820ES	Signal Surveyor Software for the RF Sensor
N6820ES-114	Basic Search, intercept and collection software
N6820ES-USD	Universal Signal Detector
N6820ES-MR1	Host-Based Modulation Recognition
N6820ES-ASD	User Programming
N6820ES-UTP	UHF/VHF FM Voice Activity Detector (ITAR controlled software option) requires Surveyor 4D version 4.1.0 or later
N6820ES-1RU	1 year of software updates and factory support
N6820ES-2RU	2 years of software updates and factory support
N6820ES-B02	Software bundle includes all options plus 1RU (except for N6820ES-UTP)
<b>Geolocation Server</b>	
N6854A	Provides a license for the Geolocation Server Software
<b>Vector Signal Analyzer</b>	
89601B	Keysight Vector Signal Analyzer
89601B-200	Basic software
89601B-AYA	Flexible Demodulation capability
<b>Broadband Omni-directional Antenna</b>	
N6850A	Compact 20 MHz to 6 GHz antenna for use with the RF Sensor

Contact your local Keysight Field Engineer to assure your VSA configuration is complete for your application.

Keysight Broadband Omni-Directional Antenna with 1.5 m Type-N RF cable for the RF Sensor.



## Technical Specifications and Operating Characteristics

All performance data is 80%/80% typical at room temperature unless otherwise indicated.

Frequency				
Frequency range	20 MHz to 6 GHz			
Frequency reference accuracy	± 20 ppb (with GPS or IEEE1588/GPS Grandmaster)			
Frequency tuning resolution	0.01 Hz			
Frequency span	Adjustable from 5 Hz to maximum frequency range			
Max IF bandwidth	20 MHz (Digital only)			
Tuner settling time	< 5 ms			
Sweep speed	> 4 GHz/sec with 10 kHz RBW			
Phase noise at 1 GHz	10 kHz offset:	-82 dBc/Hz		
	100 kHz offset:	-98 dBc/Hz		
Pre-selection filters	7 bands: 20-1800 (preamp off), 750-1800 (preamp on), 1800-2700, 2700-3250, 3250-4150, 4150-5050, 5050-6000 MHz			
Resolution bandwidth (RBW)	Selectivity	Adjustable shape factor: 2.6, 4.0 and 9.0 to 1 (with N6820ES Surveyor 4D software)		
	Range	Using N6820ES software and shape factor 9.0: 5 Hz, 10 Hz, 40 Hz, 90 Hz, 170 Hz, 330 Hz, 650 Hz, 1.29 kHz, 2.57 kHz, 5.13 kHz, 10.26 kHz, 20.51 kHz, 41.01 kHz, 82.04 kHz, 164.07 kHz, 328.13 kHz, 656.25 kHz		
		Using SAL API: 5 Hz to 1.67 MHz		
Zero span/Time domain				
N6841A offers Digital IF. I/Q recordings can be made with bandwidths and durations as indicated below.				
I/Q recording				
Signal bandwidth	21.9 MHz	10.9 MHz	5.5 MHz	2.7 MHz
I-Q recording time (seconds)	4.8	9.6	19.2	38.4
	For bandwidths below 2 MHz, streaming to disk is an effective way to record I/Q data provided the connection from the sensor to the computer is full 100 Base T. This is achieved with Surveyor 4D NarrowBand Recorder (in version 4.1.0 or later) or via SAL programming.			
Time domain display modes	Amplitude, Phase, Frequency, I and Q versus Time, Constellation diagrams and Vector Demodulation modes (using 89601B Vector Signal Analysis software)			





## Technical Specifications and Operating Characteristics (Continued)

Trigger				
Trigger type	Free Run; Frequency/Amplitude/Bandwidth/Duration Selective Trigger functions; Auto, File and Environmental Mask Trigger; Time paced (x sweep per second); Counter (x sweeps then stop)			
Universal Signal Detection	Spectral Shape (Correlation) trigger; Limit lines; “Peaks” trigger for FSK formats (assumes Signal Surveyor 4D with option USD)			
Trigger slope	Positive or Negative			
Display				
Display range	User adjustable Reference Level and Scale to .01 dB per division Ten Division grid available, also grids for Energy History, Frequency List, Alarm Regions and Handoffs (Signal Surveyor 4D)			
Trace update rates	Span 20 MHz, RBW 10 kHz, 32 averages:	> 320 updates/second (nominal)		
	Span 6 GHz, RBW 10 kHz, 4 averages:	> 1 update/second (nominal)		
Number of traces	4 (with Signal Surveyor)			
	20 (with VSA - limited only by PC performance)			
Number of averages	1 to 1,024 (with Surveyor)			
	Up to 16,384 (with SAL API)			
Amplitude				
Max input power	+20 dBm			
Input attenuator range	40 dB range (via SMT and SAL programming), in 1 dB steps			
	62 dB range of settings in 1 dB steps (via Signal Surveyor 4D)			
Input range (VSA)	+20 dBm to –42 dBm			
Antenna port isolation	> 30 dB below 600 MHz			
	> 24 dB above 600 MHz			
RF Input VSWR	< 2.5:1			
ADC	14 bit at 56 MS/sec			
Amplitude accuracy (Power measurement, Center of IF)	User atten ≤ 20 dB:	± 2.0 dB		
	User atten > 20 dB, 20 MHz to 5.9 GHz:	± 3.0 dB		
	User atten > 20 dB, 5.9 to 6 GHz:	± 4.0 dB		
Noise figure, sensitivity and displayed Average Noise Level DANL (with amplitude corrections, user attenuation set to –16 dB, center of IF)	Frequency	Noise figure	Sensitivity (25 KHz RBW)	DANL (10 Hz RBW)
	750 to 1240 MHz (preamp <sup>1</sup> on)	< 13.2 dB	< –116.8 dBm	< –150.8 dBm
	1250 to 1700 MHz (preamp <sup>1</sup> on)	< 14.3 dB	< –115.7 dBm	< –149.7 dBm
	1700 to 1800 MHz (preamp <sup>1</sup> on)	< 16.6 dB	< –115.4 dBm	< –149.4 dBm
	20 to 60 MHz	< 22.0 dB	< –108.0 dBm	< –142.0 dBm
	60 to 800 MHz	< 18.0 dB	< –112.0 dBm	< –146.0 dBm
	800 to 1850 MHz	< 22.0 dB	< –108.0 dBm	< –142.0 dBm
	1850 to 2550 MHz	< 19.5 dB	< –110.5 dBm	< –144.5 dBm
	2550 to 2850 MHz	< 22.0 dB	< –108.0 dBm	< –142.0 dBm
	2850 to 3650 MHz	< 20.0 dB	< –110.0 dBm	< –144.0 dBm
	3650 to 4650 MHz	< 23.5 dB	< –106.5 dBm	< –140.5 dBm
	4650 to 6000 MHz	< 26.0 dB	< –104.0 dBm	< –138.0 dBm
	Cable loss between antenna and receiver (minimal due to collocation of antenna and IP67 receiver): 1 to 2 dB			

1. Pre-amp in table refers to a banded pre-amp which, when engaged, operates in the frequency range of 750 to 1800 MHz.



## Technical Specifications and Operating Characteristics (Continued)

Amplitude (Continued)		
Second Order Intercept SOI (mixer level = -10 dBm)	Frequency	SOI (IP2), dBm
	20 to 850 MHz	> 26
	850 to 1450 MHz	> 58
	1450 to 2400 MHz	> 39
	2400 to 2800 MHz	> 29
Third Order Intercept TOI (IP3, 0 dB user attenuation, 200 kHz tone spacing, both in IF, mixer level = -10 dBm)	Frequency	TOI (IP3), dBm
	20 to 850 MHz	> 7.7
	850 to 2700 MHz	> 8.5
	2700 to 2900 MHz	> 5.0
	2900 to 5900 MHz	> 6.6
IF/Image/Spurious rejection	Frequency	IF/Image/Spurious rejection
	20 to 200 MHz	> 48.0
	200 to 650 MHz	> 52.5
	650 to 2650 MHz	> 53.0
	2650 to 2750 MHz	> 48.0
	2750 to 3850 MHz	> 53.5
	3850 to 3880 MHz	> 48.5
	3880 to 6000 MHz	> 51.0
Time and location		
Clock synchronization methods	GPS or Precision time protocol (IEEE-1588, 2008 compatible)	
PTP clock modes	Grandmaster/Master/Slave	
Time reference accuracy to UTC	With GPS < 20 nanoseconds	
	With PTP < 40 nanoseconds	
Data timestamp resolution	18 nanoseconds	
GPS	Receiver	Trimble resolution-SMTx (built into RF sensor unit)
	Operating modes	Fixed or mobile (Land)
	GPS horizontal accuracy	< 9 meters (90%)
	GPS altitude accuracy	< 18 meters (90%)
	GPS antenna	Remote active (3.3V) antenna with 3 meter cable



## Technical Specifications and Operating Characteristics (Continued)

Signal processing		
Usable information bandwidth	20 MHz	
Data types	I/Q time series	16 or 32 bit resolution
	FFT spectrum	Up to 16k points, 50% overlapped
Data transfer modes	I/Q and FFT (simultaneous) Streaming or Block mode	
Data streaming rates (Gapless) on 100BT network	I/Q time series	Up to 2 MHz signal bandwidth
	FFT spectrum	Full 20 MHz FFT spectrum
Signal LOOKBack capture memory	512 MBytes (This provides 4.8 seconds of 20 MHz wide IQ time series capture or lookback)	
LOOKBack refers to the ability to stream wideband I/Q data into the First In First Out (FIFO) memory located in the RF Sensor. When short duration bursts occur, LOOKBack enables the user to detect and locate these short bursts.		
Tune and listen (in signal surveyor)	Audio demodulation types	AM, FM
	Audio output	Streams gap-free Stereo, Left and/or Right channel
	Receiver bandwidth	Adjustable from 6 kHz to 200 KHz
	Squelch range	−135 to −20 dBm
	Audio recording length	Streams to disk, limited by file or drive size
	Audio filtering	High and Low Pass Filters available for voice enhancement

### Digital Downconverters (DDC's)

The standard N6841A has one DDC with a dynamic bandwidth ranging up to 20 MHz. This DDC is used by the Surveyor 4D application for audio streaming, IQ recording, modulation recognition or geolocation functions.

When the N6841A-MFP option is purchased, it enables a new FPGA image that has up to 8 DDC's each with bandwidth up to 200 kHz. The DDC bandwidth can be adjusted globally but is fixed across all eight channels and can be used for narrowband signal processing by the Surveyor 4D application or via the SAL programming interface.

Sensor management and software		
Sensor host PC	Operating system	Win7 (32/64 bit), Win8
	CPU	> 2 GHz, minimum 2 processors
	RAM	> 4 GB
	Hard Drive	> 300 GB
RF Sensor health and status monitor	Hardware watchdog checks in once per minute	
RF Sensor diagnostics	Remote controlled self-test	
RF Sensor data security	RAM memory cleared at power-off or reboot	
Included applications	Sensor Management	
	AM/FM audio streaming <sup>1</sup>	
	Spectrum Viewer	
	Emitter Geolocation (with N6854A software)	
Networking interface	10/100 Ethernet TCP	
Networking IP address type	Auto / DHCP / Static	
Network configuration options	Sensor Alias	
	IP address	
	Host Name	
	Subnet Mask	
	Gateway IP	
	DNS1, DNS2	

1. AM/FM Audio streaming provided with the RF Sensor software offers AM, FM and FM-W demodulation and requires only 0.2% of a 100Mbps link to stream FM-W audio back from the RF Sensor. Spectrum Viewer requires about .5% of a 100Mbps link to bring a gap free 20 MHz spectrum into view.



## Technical Specifications and Operating Characteristics (Continued)

Programmatic interface		
Sensor Access Library (SAL)	C language API supported in both Windows and Linux OS	
Functions available	Over 50 callable routines/functions for sensor control and remote data access	
Data retrieval	I/Q time series or FFT spectrum data	
Embedded Applications	Allows user defined programs to run autonomously on the RF sensor’s embedded Linux processor (requires SMT Version 2.0.5 or later)	
General		
Power requirements	15 to 24 VDC nominal (optional 120/240 VAC indoor adapter)	
Power consumption	30 Watts maximum; 25 Watts typical	
Enclosure	Sealed Aluminum case	
Dimensions	Length	29.2 cm (11.5 in)
	Width	24.6 cm (9.7 in)
	Height	5.4 cm (2.1 in)
Weight	3.5 kg (7.7 lb)	
Connectors	RF input ports (2)	Type-N (50 ohm) electronically switched
	Power	Switchcraft SF6382-2SG-520 standard circular connector
	LAN	Ethernet RJ45, ruggedized and weatherproof
	GPS	Type-TNC (female)
Enclosure rating	IP67 (for ingress of dust and water)	
Temperature Range (Operational & Storage)	<b>Operational:</b> -15 °C to +55 °C (5 °F to 131 °F) <b>Storage:</b> -40 °C to +70 °C (-40 °F to 158 °F) <i>Direct sunlight requires a heat shield. Extend operating range below -15 °C by installing sensor in a heated enclosure. All temperature specs are assumed to be at sea level.</i>	
Humidity	15 to 95%	
Altitude	6400 m (21,000 feet) maximum	
EMC/Radio Compliance	Complies with the essential requirements of the European Radio Equipment Directive (For more information see the N6841A Declaration of Conformity at: <a href="http://regulations.about.keysight.com/DoC">http://regulations.about.keysight.com/DoC</a> ) IEC 61326-1, EN 61326-1 Immunity table 2: Industrial locations, CISPR 11 Emissions group 1 Class B: Domestic locations (Requires a double shielded, Cat7 ethernet cable with the Keysight provided weatherproof boot).	
Safety compliance	IEC 61010-1:2010 / EN 61010-1:2010 (3rd Edition)	
ITU-R compliance	ITU-R SM.377 between 20 to 6000 MHz (frequency and frequency offset measurements)	
	ITU-R SM.378 (field strength measurements)	
	ITU-R SM.328 (bandwidth measurements)	
Pole-top mount	7.6 cm (3 inches) maximum diameter pole or rail mount	
Rack-mount	19 inch rack 2U height	
Accessories supplied	Mounting Bracket with assembly hardware to attach and secure the RF Sensor	
	Ruggedized Ethernet RJ45 connector to attach to RF Sensor	
	Switchcraft connector for power cable to source RF Sensor	
	Installation Guide	





[www.axiestandard.org](http://www.axiestandard.org)

AdvancedTCA® Extensions for Instrumentation and Test (AXIe) is an open standard that extends the AdvancedTCA for general purpose and semiconductor test. The business that became Keysight was a founding member of the AXIe consortium. ATCA®, AdvancedTCA®, and the ATCA logo are registered US trademarks of the PCI Industrial Computer Manufacturers Group.



[www.pxisa.org](http://www.pxisa.org)

PCI eXTensions for Instrumentation (PXI) modular instrumentation delivers a rugged, PC-based high-performance measurement and automation system.

## Download your next insight

Keysight software is downloadable expertise. From first simulation through first customer shipment, we deliver the tools your team needs to accelerate from data to information to actionable insight.



- Electronic design automation (EDA) software
- Application software
- Programming environments
- Productivity software

Learn more at

[www.keysight.com/find/software](http://www.keysight.com/find/software)

Start with a 30-day free trial.

[www.keysight.com/find/free\\_trials](http://www.keysight.com/find/free_trials)

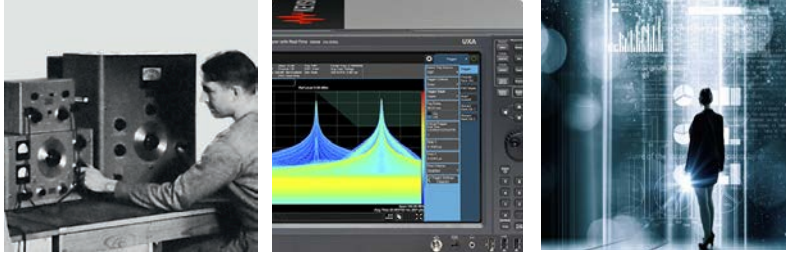




## Evolving Since 1939

Our unique combination of hardware, software, services, and people can help you reach your next breakthrough. We are unlocking the future of technology.

From Hewlett-Packard to Agilent to Keysight.



### myKeysight

#### myKeysight

[www.keysight.com/find/mykeysight](http://www.keysight.com/find/mykeysight)

A personalized view into the information most relevant to you.

[http://www.keysight.com/find/emt\\_product\\_registration](http://www.keysight.com/find/emt_product_registration)

Register your products to get up-to-date product information and find warranty information.

### KEYSIGHT SERVICES

Accelerate Technology Adoption.  
Lower costs.

#### Keysight Services

[www.keysight.com/find/service](http://www.keysight.com/find/service)

Keysight Services can help from acquisition to renewal across your instrument's lifecycle. Our comprehensive service offerings—one-stop calibration, repair, asset management, technology refresh, consulting, training and more—helps you improve product quality and lower costs.



#### Keysight Assurance Plans

[www.keysight.com/find/AssurancePlans](http://www.keysight.com/find/AssurancePlans)

Up to ten years of protection and no budgetary surprises to ensure your instruments are operating to specification, so you can rely on accurate measurements.

#### Keysight Channel Partners

[www.keysight.com/find/channelpartners](http://www.keysight.com/find/channelpartners)

Get the best of both worlds: Keysight's measurement expertise and product breadth, combined with channel partner convenience.

[www.keysight.com/find/n6841a](http://www.keysight.com/find/n6841a)

For more information on Keysight Technologies' products, applications or services, please contact your local Keysight office. The complete list is available at:

[www.keysight.com/find/contactus](http://www.keysight.com/find/contactus)

### Americas

Canada	(877) 894 4414
Brazil	55 11 3351 7010
Mexico	001 800 254 2440
United States	(800) 829 4444

### Asia Pacific

Australia	1 800 629 485
China	800 810 0189
Hong Kong	800 938 693
India	1 800 11 2626
Japan	0120 (421) 345
Korea	080 769 0800
Malaysia	1 800 888 848
Singapore	1 800 375 8100
Taiwan	0800 047 866
Other AP Countries	(65) 6375 8100

### Europe & Middle East

Austria	0800 001122
Belgium	0800 58580
Finland	0800 523252
France	0805 980333
Germany	0800 6270999
Ireland	1800 832700
Israel	1 809 343051
Italy	800 599100
Luxembourg	+32 800 58580
Netherlands	0800 0233200
Russia	8800 5009286
Spain	800 000154
Sweden	0200 882255
Switzerland	0800 805353
	Opt. 1 (DE)
	Opt. 2 (FR)
	Opt. 3 (IT)
United Kingdom	0800 0260637

For other unlisted countries:

[www.keysight.com/find/contactus](http://www.keysight.com/find/contactus)  
(BP-9-7-17)

DEKRA Certified  
ISO 9001 Quality Management System

[www.keysight.com/go/quality](http://www.keysight.com/go/quality)

Keysight Technologies, Inc.  
DEKRA Certified ISO 9001:2015  
Quality Management System

This information is subject to change without notice.

© Keysight Technologies, 2017 – 2018

Published in USA, November 8, 2018

5990-3839EN

[www.keysight.com](http://www.keysight.com)

